

Product Use Intent



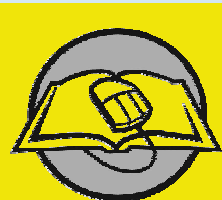
Commercial Use

ANSYS Commercial Products!

ACADEMIC USE

Undergrad & Grad Teaching

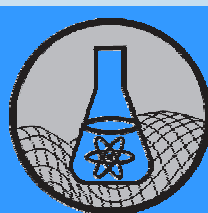
Classroom environment



Teaching

Postgraduate Research

University funded Research

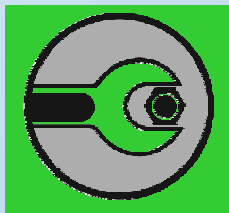


Research

Commercially funded Research



Associate



Academic Toolbox

Product Terms of Use



Academic Teaching:

- Intended for undergraduate (or graduate) teaching. May NOT be used for Research.
- Work must be public domain, non-proprietary. User(s) must be affiliated with an academic entity



Academic Research:

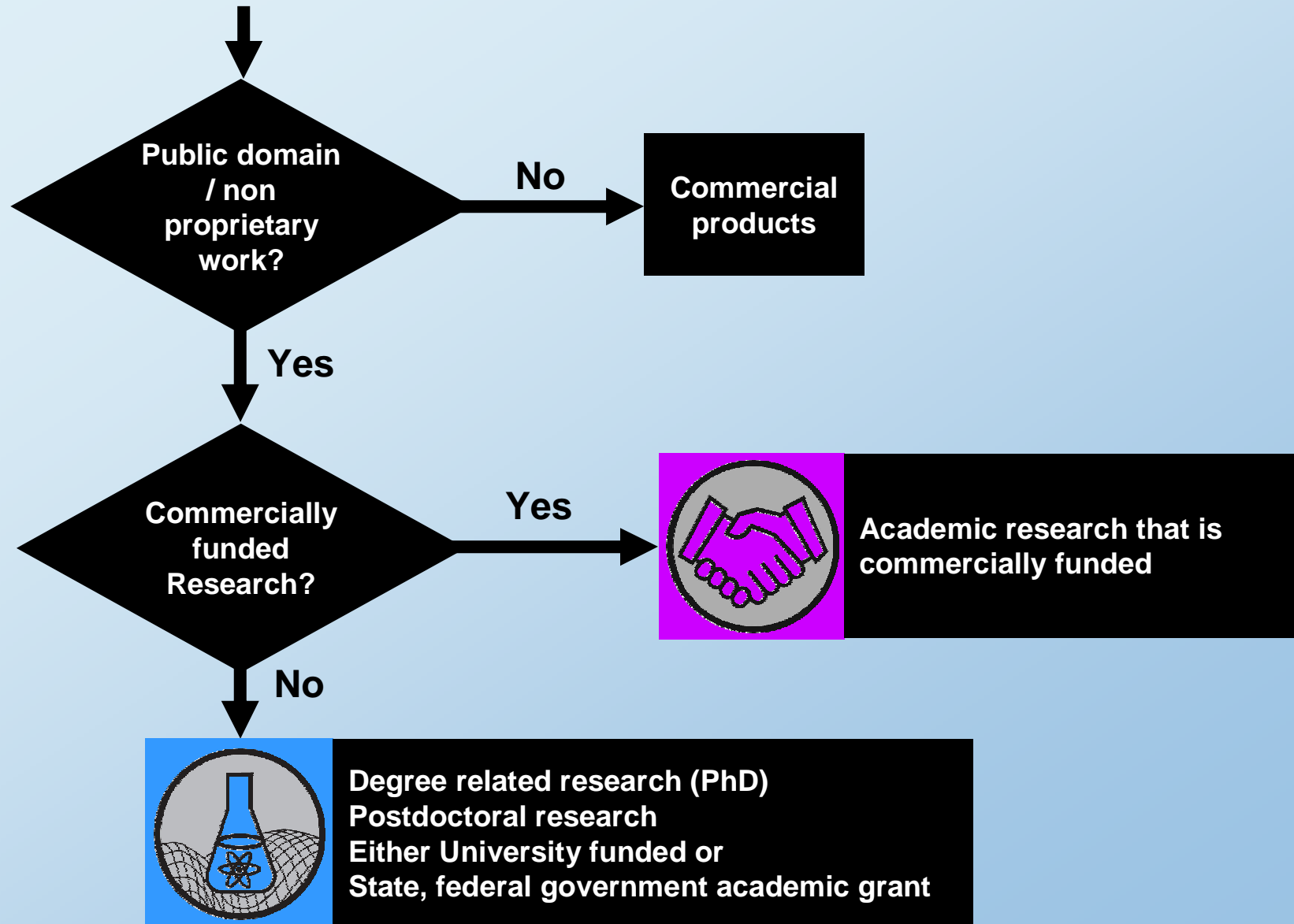
- Intended use is academic research (either degree or non degree related) that is funded by an academic grant, scholarship, or directly by a University. May be used for Academic teaching.
- Work must be public domain, non-proprietary. User(s) must be affiliated with an academic entity.
- Agreement requires delivery of marketing collateral to ANSYS Inc. such as case study or testimonial.



Academic Associate:

- Intended use is academic research (either degree or non degree related) that is commercially funded. May be used for Academic Teaching.
- The analysis work must be public domain, non-proprietary. User(s) must be affiliated with an academic entity.

Research or Associate?



Example Product Contents



Academic Associate

Multiphysics
CFX Full Capability solver
Workbench
Fatigue Module
Design Modeler
CFX-Pre, CFX-Post, CFX-Mesh
Paramesh
DesignXplorer (DoE and VT)
ICEM CFD Meshing
HTI TAS
MCAD Connections



Academic Research

Multiphysics
CFX Full Capability solver
Workbench
Fatigue Module
Design Modeler
CFX-Pre, CFX-Post, CFX-Mesh
Paramesh
DesignXplorer (DoE and VT)
ICEM CFD Meshing
HTI TAS
MCAD Connections



Academic Teaching

Multiphysics
CFX Full Capability solver
Workbench & DesignSpace
Fatigue Module
Design Modeler
CFX-Pre, CFX-Post, CFX-Mesh
Paramesh
DesignXplorer (DoE and VT)
ICEM CFD Meshing
HTI TAS
MCAD connections

Example Product Contents



Academic Teaching CFD

CFX Full Capability solver

Workbench

Design Modeler

CFX-Pre, CFX-Mesh, CFX-Post

DesignXplorer (DoE)

ICEM CFD Meshing

MCAD connections



Academic Teaching Mechanical

Mechanical

Workbench

Fatigue Module

Design Modeler

DesignSpace

Paramesh

DesignXplorer (DoE and VT)

ICEM CFD Meshing

MCAD Connections

Note: These separate CFD & Mechanical products are included primarily to address needs of territories with both FBU & MBU specific sales channels.

Problem Size - Node Limits



	Structural & Thermal	Direct Coupled Field	LF Emag	HF Emag	FLOTRAN	Design Space ²	CFX	AUTODYN ³	TAS ²
Academic Teaching Advanced	256K	256K	512K	1024K	1024K	∞	512K		∞
Academic Teaching Introductory	32K	32K	64K	512K	512K	∞	512K		∞
Academic Teaching CFD							512K		
Academic Teaching Mechanical	256K	256K ¹				∞			
Academic Teaching AUTODYN								50K	

- Notes:
1. Our standard "Mechanical" Direct coupled field elements available for thermal-structural etc.
 2. The Design Space & TAS capability have no problem size limits.
 3. AUTODYN limits are 10K nodes for 2D and 50K nodes for 3D

Noncommercial Use Only Logo



Academic specific logo stating “noncommercial use only” has been implemented in Workbench & non Workbench applications.

Reasons:

- Differentiate academic from commercial products
- Provide a strong visual legal cue to our academic users.
- Present on all Teaching & Research variants.

